

# A Deep Dive on: Blood Sugar Support

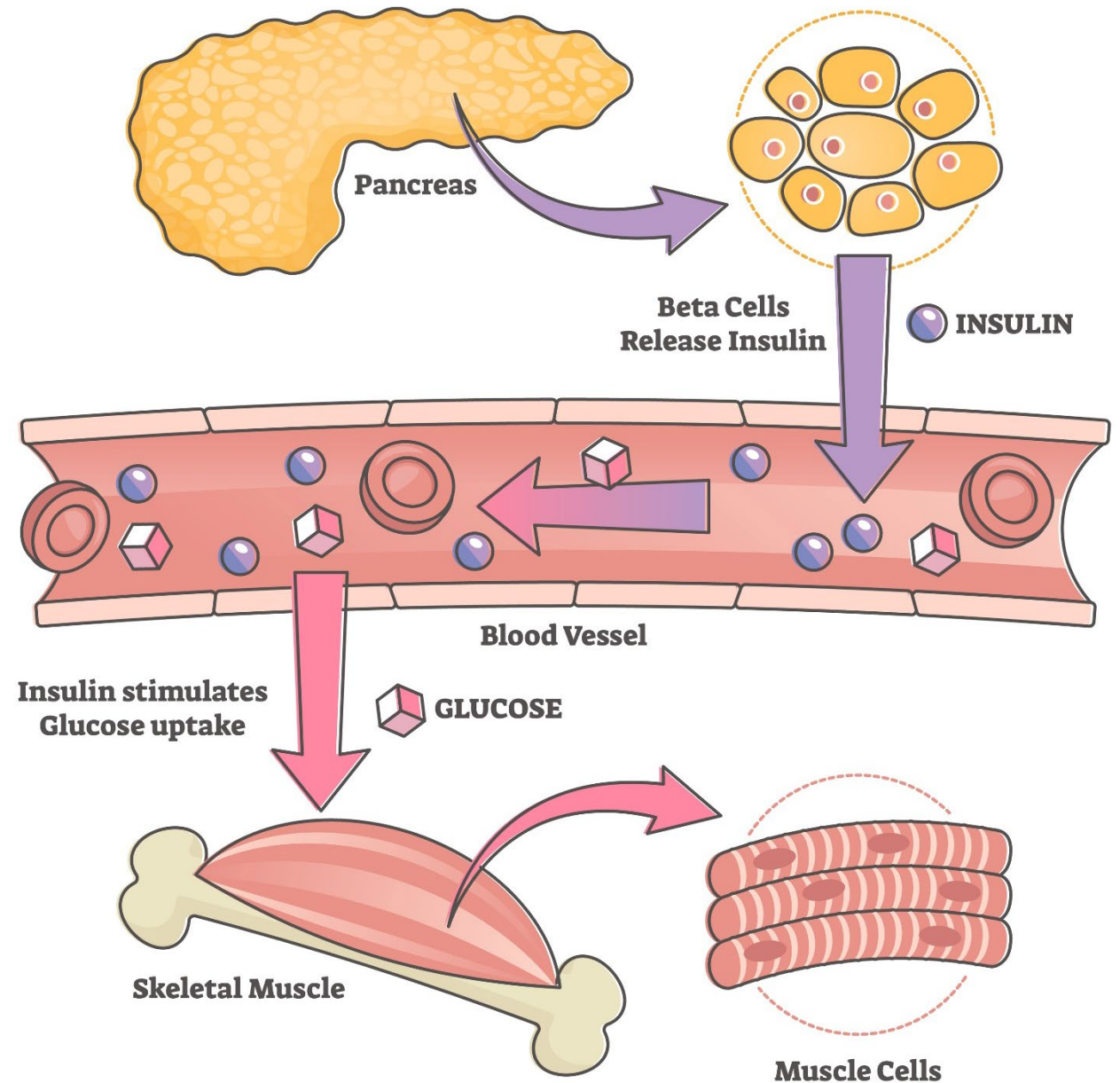


# Blood Sugar Levels

# Refresher: What is Insulin?

Insulin is a hormone  
secreted by the pancreas

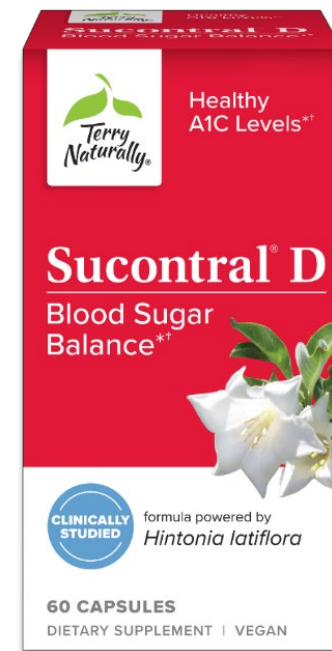
Insulin moves fuel [in the  
form of glucose] from the  
bloodstream into cells to be  
burned for energy





# Sucontral<sup>®</sup> D

- Terry Naturally<sup>®</sup> exclusive – nothing else like it on the market
- Clinically proven: over 70 years of research
- Side benefits: supports healthy cholesterol and triglyceride balance\*†
  - Healthy insulin function
  - Healthy A1C levels†
  - Carbohydrate metabolism
  - Blood sugar levels\*†



## SUPPLEMENT FACTS

Serving Size: 1 Capsule  
Servings Per Container: 60

Amount Per 1 Capsule (Veg):	%DV
Vitamin C (as ascorbic acid)	30 mg 33%
Vitamin E (as d-alpha tocopherol acetate)	5 mg (7.5 IU) 33%
Thiamin (Vitamin B1) (as thiamin HCl)	0.7 mg 58%
Riboflavin (Vitamin B2)	0.8 mg 62%
Vitamin B6 (as pyridoxine HCl)	1 mg 59%
Folate	170 mcg DFE (100 mcg folic acid) 43%
Vitamin B12 (as cyanocobalamin)	0.5 mcg 21%
Biotin	50 mcg 167%
Zinc (from zinc acetate)	5 mg 45%
Chromium (from chromium chloride)	25 mcg 71%

Copalchi (*Hintonia latiflora*) Bark Extract (2-4:1) 100 mg \*\*  
providing 20 mg of polyphenols

\*\*Daily Value not established

†Supports healthy levels already within normal range

Recommendations: 1 capsule, twice daily. May increase to 1 capsule, three times daily for advanced support.

\*These statements have not been evaluated by the Food and Drug Administration. This product is not intended to diagnose, treat, cure or prevent any disease.



# Healthy Feet & Nerves

*supports healthy nerve function in the feet and throughout the body\**

- **Supports key areas for healthy nerve function\***
  - Blood sugar metabolism\*
  - Circulation\*
- **Bioactive Bs and Chelated minerals**
  - Active B6, B12 and folate – no conversion by the liver necessary
  - Mineral chelates for optimal absorption
- **High dose alpha lipoic acid**
  - 600 mg per 4 capsules
  - Clinically studied dosage level

Recommendations: 2 capsules twice daily.

\*These statements have not been evaluated by the Food and Drug Administration. This product is not intended to diagnose, treat, cure or prevent any disease.



SUPPLEMENT FACTS		
Serving Size: 2 Capsules		
Servings Per Container: 30		
Amount Per 2 Capsules (Veg):		%DV
Thiamin (B1) (from thiamin HCl)	25 mg	2,083%
Riboflavin (vitamin B2)	25 mg	1,923%
Niacin (as niacinamide)	10 mg	63%
Vitamin B6 (as pyridoxal-5-phosphate)	30 mg	1,765%
Folate	425 mcg DFE (250 mcg)	106%
<small>(from (6S)-5-methyltetrahydrofolic acid, glucosamine salt)<sup>†</sup></small>		
Vitamin B12 (as methylcobalamin)	500 mcg	20,833%
Biotin (as d-biotin)	1,000 mcg	3,333%
Pantothenic Acid (from d-calcium pantothenate)	200 mg	4,000%
Zinc (from TRAACS™ zinc glycinate chelate)	10 mg	91%
Chromium (from TRAACS™ chromium nicotinate glycinate chelate)	200 mcg	571%
Alpha Lipoic Acid	300 mg	**
Boswellia ( <i>Boswellia serrata</i> ) Gum Resin Extract	100 mg	**
<small>(BOS-10®) standardized to contain ≥ 70% total organic and boswellic acids with AKBA ≥ 10%, with ≤ 5% beta-boswellic acids</small>		
Benfotiamine	50 mg	**

\*\*Daily Value (DV) not established.

†US Patent No. 7,947,662

# How to Use Berberine

**Standard dosage 500 mg, 3x daily**

## Berberine challenges:

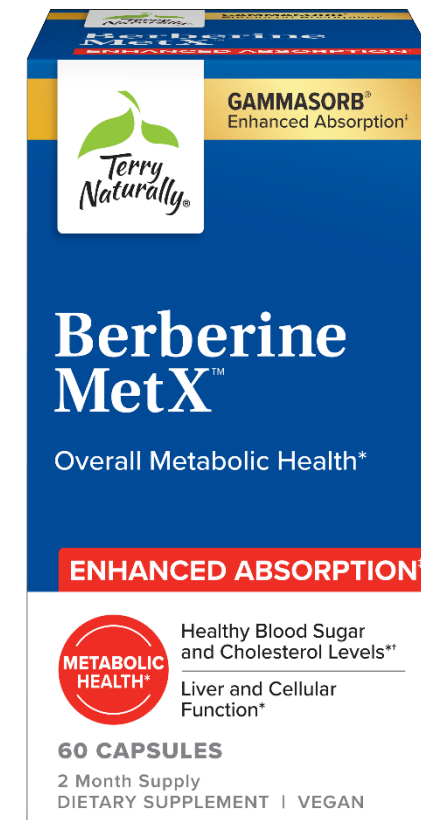
- Limited absorption/poor bioavailability
- Poor water solubility

**For enhanced effects, 250 mg combined with gamma cyclodextrin**

- Berberine with a gamma cyclodextrin formulation showed double the benefits

# Berberine MetX Ultra Absorption

- High quality berberine extract Formulated with GammaSorb™- shown to boost nutrient absorption; allows for a lower dose
- Just one daily for heart, brain, liver, cellular, and metabolic health\*
- Formulated with GammaSorb for enhanced absorption



<b>SUPPLEMENT FACTS</b>		
Serving Size: 1 Capsule		
Servings Per Container: 60		
Amount Per 1 Capsule (Veg):		%DV
Berberine	250 mg	**
[from Phellodendron ( <i>Phellodendron amurense</i> ) Bark Extract]		
**Daily Value (DV) not established.		

Recommendations: 1 capsule daily

\*These statements have not been evaluated by the Food and Drug Administration. This product is not intended to diagnose, treat, cure or prevent any disease.



# CuraMed Family

## Softgel

- 750 mg: 500 mg curcuminoids
- 375 mg: 250 mg curcuminoids

## Capsule<sub>v</sub>

- 500 mg: 430 mg curcuminoids

## Syrup<sub>v</sub>

- 212 mg curcuminoids
- **Kids and those with difficulty swallowing**

## Chewable<sub>v</sub>

- 100mg: 45 mg curcuminoids
- **Great for Kids**





# Red Sage Plus

- **Combination of two ultra-clean ingredients from hydroponic cultivation:**
  - HRS65 red sage [danshen]
  - HRG80 red ginseng
- **Whole root, not an extract**
- **Verified never adulterated, grown without pesticides**
- **Heart-focused formula**
  - Healthy blood flow and circulation
  - Healthy blood vessels and arteries \*



SUPPLEMENT FACTS		
Serving Size: 1 Capsule		
Servings Per Container: 30		
Amount Per 1 Capsule (Veg):		%DV
Red Sage ( <i>Salvia miltiorrhiza</i> ) Root Powder (HRS65™)	100 mg	**
Korean Red Ginseng ( <i>Panax ginseng</i> ) Root Powder (HRG80™) containing rare, noble ginsenosides	100 mg	**
**Daily Value (DV) not established.		

Recommendations: 1 capsule daily. May take one capsule, two to four times daily, for additional support.

\*These statements have not been evaluated by the Food and Drug Administration. This product is not intended to diagnose, treat, cure or prevent any disease.



# Clinical OPC

- Always grape seed, never adulterated!
- Standardized to contain  $\geq 99\%$  polyphenols and  $\geq 80\%$  OPCs (Tannin free)
- Five published scientific studies
- Five time winner of a Vity Award including the last 4 consecutive years!
- Three different dosages:
  - 150 and 300 mg capsules
  - 400 mg softgel



SUPPLEMENT FACTS		
Serving Size: 1 Capsule		
Servings Per Container: 60		
Amount Per 1 Capsule (Veg):		%DV
French Grape ( <i>Vitis vinifera</i> ) Seed Extract (VX1 <sup>®</sup> )	150 mg	**
Standardized to contain $\geq 99\%$ polyphenols and $\geq 80\%$ OPCs (Tannin Free)		
** Daily Value (DV) not established		

Recommendations: 1 capsule or softgel, one to three times daily.